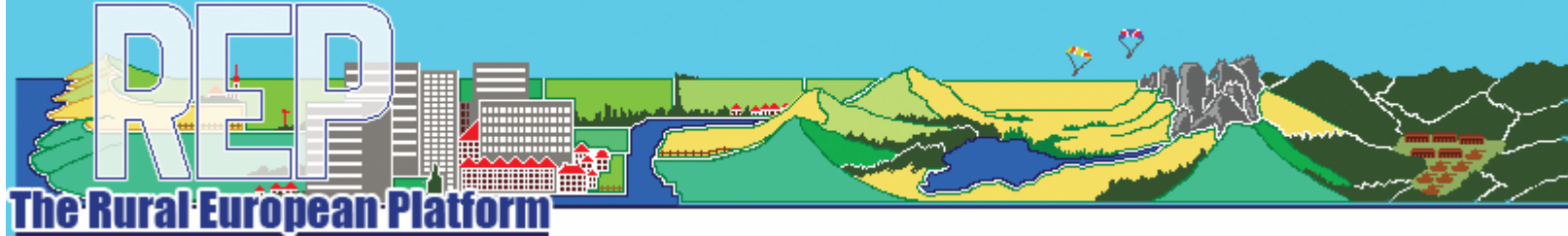


REP – an introduction

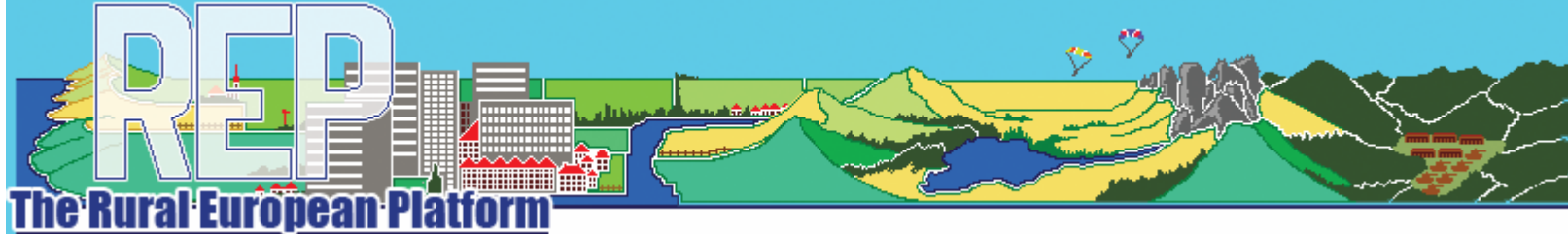
Reinier de Man

REP facilitator



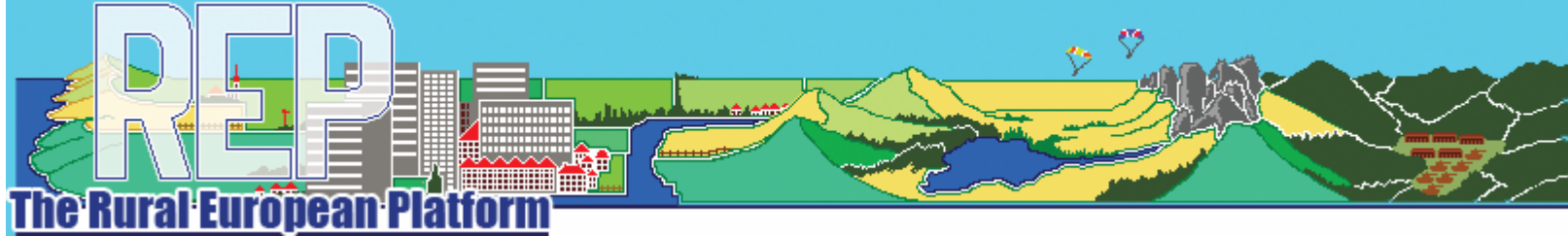
REP'S ISSUE

- Countryside and high quality food
 - The public want to maintain the values of the rural countryside
 - The farmer wants to produce high quality food
- Create a business case for high quality food production and the protection of the countryside:
 - by organising supply chains, marketing of regional products
 - by selective financial support of the farmer
 - using the full potential of private financing
 - using European and national public finance, only where it is needed and where it is effective
 - develop public-private partnerships



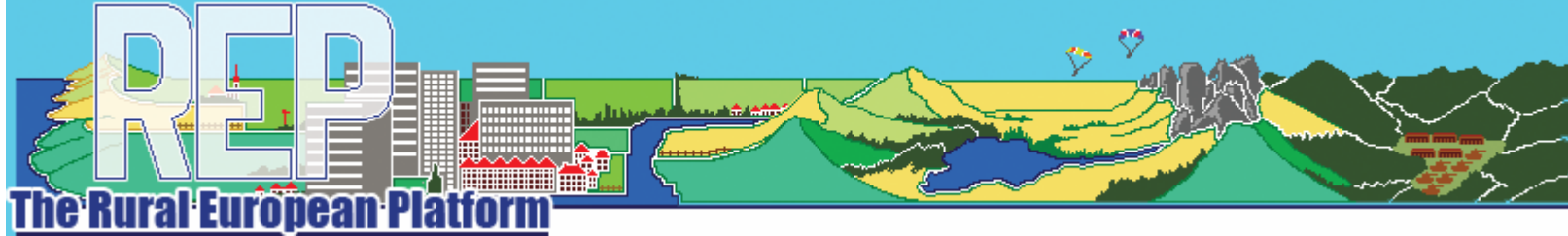
REP'S APPROACH

- Integrate many values
 - agriculture
 - rural development
 - biodiversity, nature protection
- Find region specific solutions
 - regions near urban areas can profit from a strong demand for countryside values
- Regional partnerships are the basis
 - authorities
 - private players along the supply chain
 - public-private partnerships, including financial players



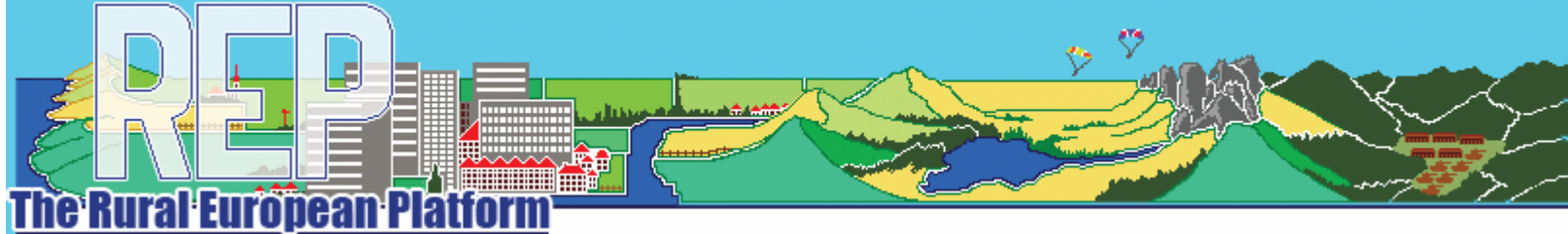
REP

- REP is at the forefront of knowledge exchange and policy formulation for sustainable rural development in Europe:
 - *development that creates added economic value at the local and regional level, protects and develops biodiversity and contributes to social cohesion.*
- REP is connecting
 - knowledge and practical experience on the ground
 - with policy development and implementation at the European and national level.
- REP is the network for effective and innovative solutions
 - that create the right conditions for financing sustainable rural development through co-operation between the public and the private sector.
 - REP is providing a basis for maximising the performance of public money for rural development and agriculture.



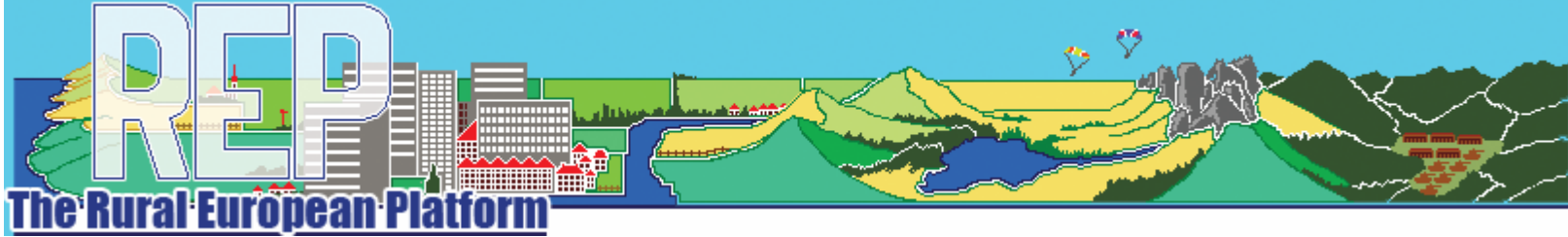
REP'S EXPANDING NETWORK

- UK
 - Natural England (M. Denton Thompson)
 - South Downs JC
- Netherlands (a.o.)
 - LTO (requested)
 - N. Brabant prov. / Boxtel mun.
 - Land owners association
 - Alterra / Un. Wageningen
- Norway
 - Farmers Union + others
- Portugal
 - High level contacts (requested)
 - Universities, farmer organisation
- Poland
 - high level contacts developing
 - Eco Fund
- Germany
 - high level contacts (requested)
 - Universities
- Romania
 - contacts developing
- Ukraine
 - high level contacts being established
- Europe
 - Europarcs (requested)

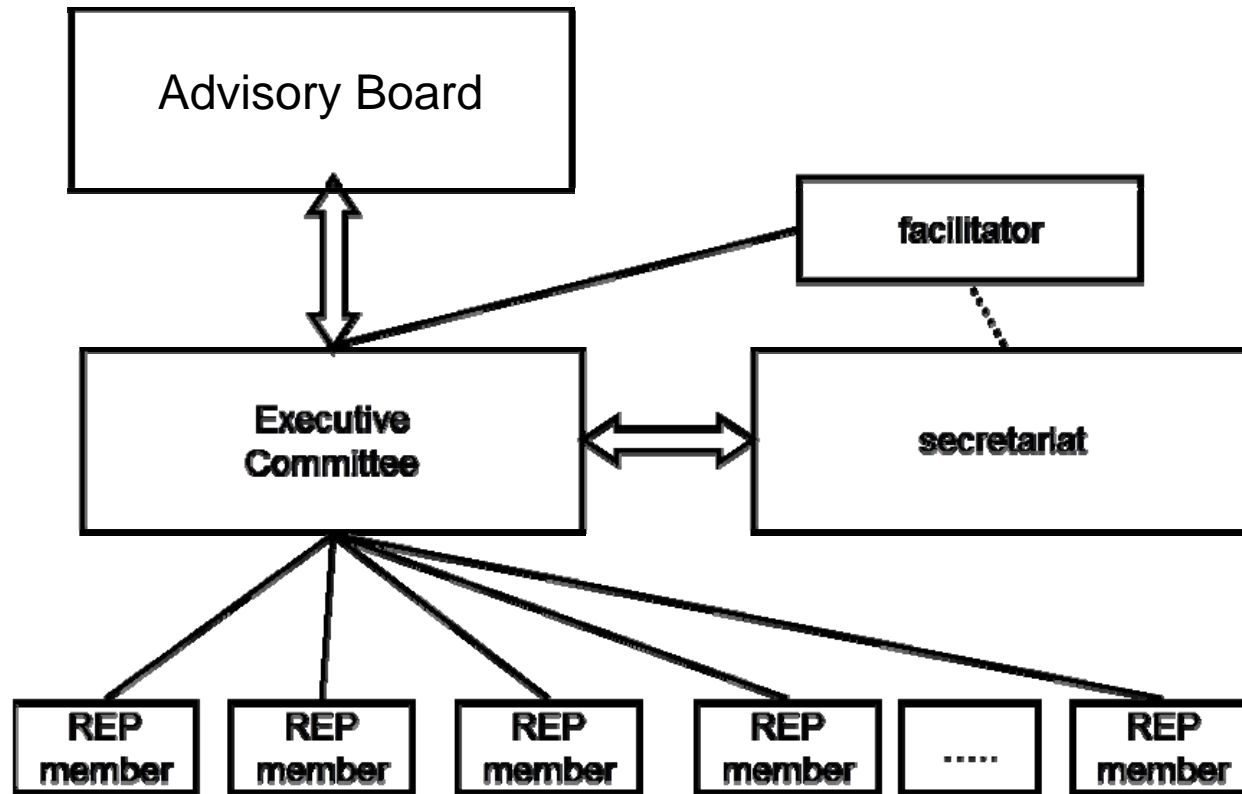


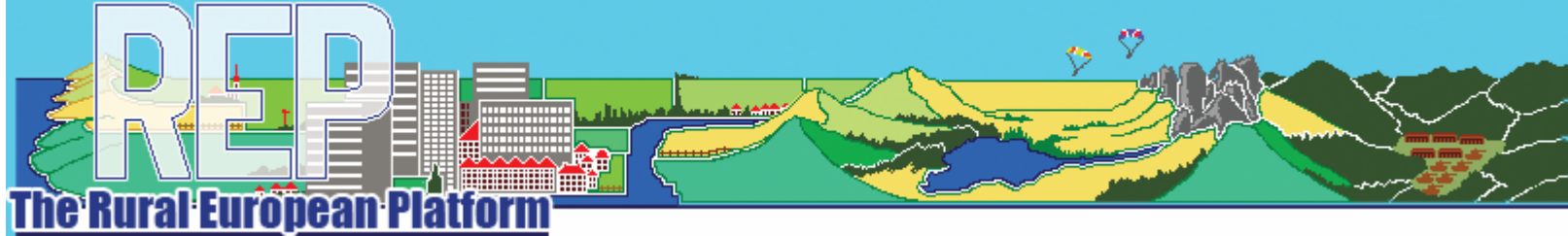
REP HISTORY & FUTURE

1. Constitution of REP at Lien, Norway (July 2004)
 - Joint initiative of Alterra (NL) and Planteforsk (N)
 - → Lien declaration as kick-off for REP
2. Setting up REP (2005-2007)
 - first phase (2006) financed by LIFESCAPE/Interreg III
 - creating governance, membership, sustainable finance (2007)
3. REP Workshop in Falenty, Poland (October 2006)
 - First step in collecting key projects / partners
4. REP Workshop in Porto, Portugal (October 2007)
 - High level symposium for EU and national policy makers
 - Workshop focussing on Southern Europe



REP GOVERNANCE





CONTACT

- Dr. Reinier de Man
 - sustainable business development
Kloksteeg 33, 2311 SK Leiden, The Netherlands
 - Tel: +31 71 512 8422, mobile +31 6 5316 5441
 - reinier.de.man@rdeman.nl
- Neil Hill
 - South Downs JC
 - Victorian Business Centre, Ford Lane, Ford BN18 0EF
 - Tel: 01243 558700
 - nhill@southdowns-aonb.gov.uk